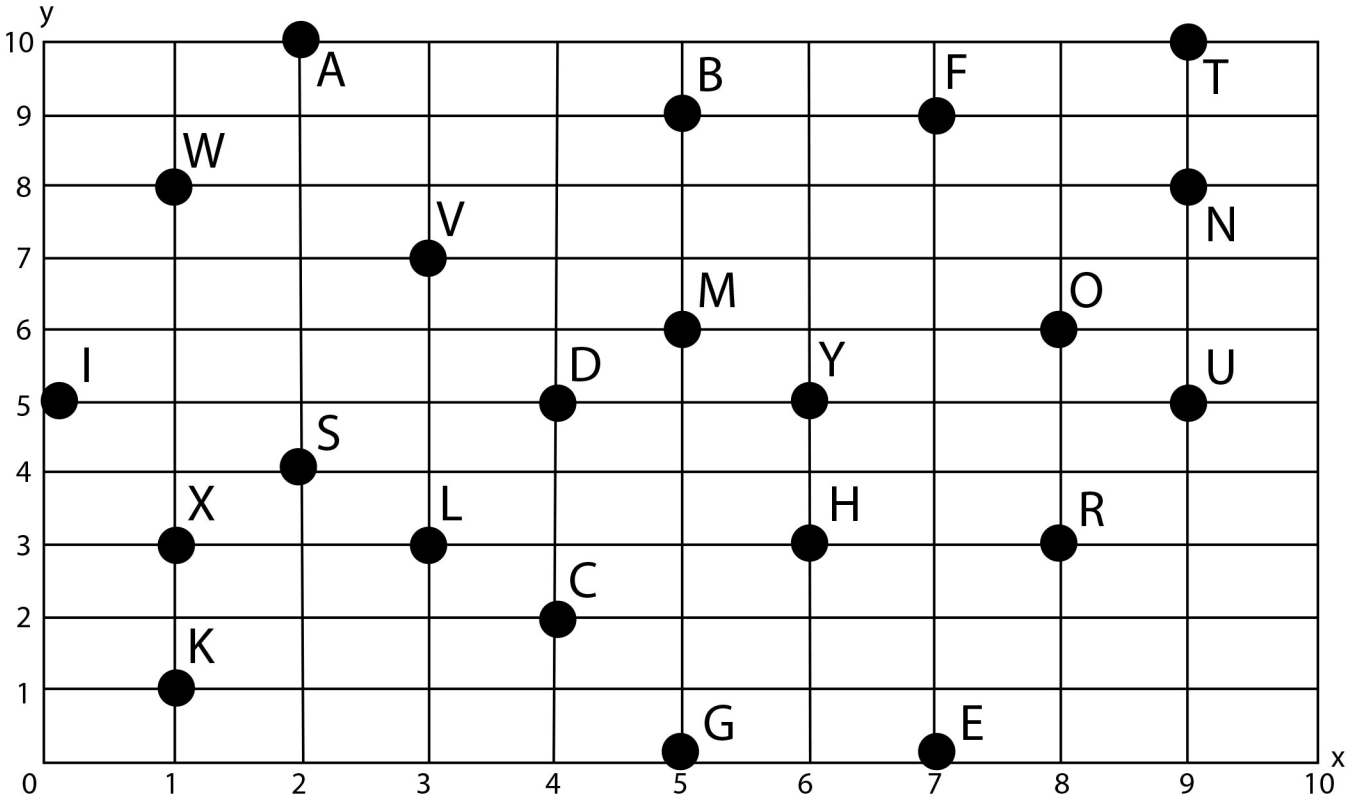


Hidden Message Graph

Instructions:

Match the letters to the coordinate points below (x,y).

By doing so, you will reveal the hidden message.



(9,10) (2,10) (1,1) (7,0) (2,10) (3,3) (8,6) (2,10) (4,5)

(8,6) (7,9) (7,9) (9,10) (7,0) (1,3) (2,10) (2,4)

(2,4) (2,10) (3,7) (0,5) (9,8) (5,0) (7,0) (9,8) (7,0) (8,3) (5,0) (6,5)

(5,6) (2,10) (1,1) (7,0) (2,4) (4,2) (7,0) (9,8) (9,10) (2,4)
